

FY 15-19 Expansion Review

Serena Muhammad, MHB

December 5, 2019

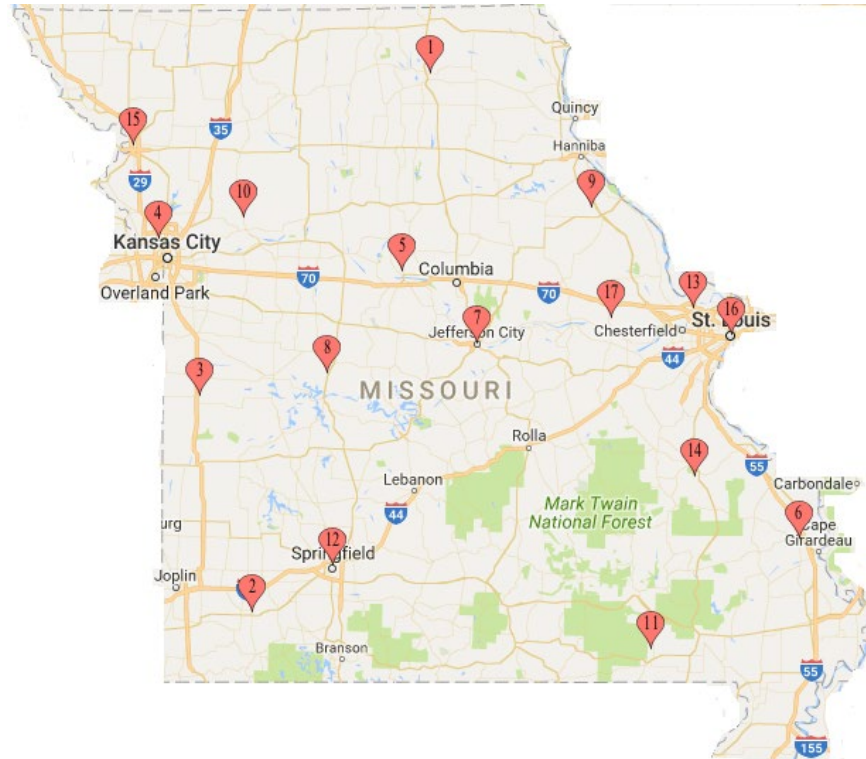


System of Care
is NOT a
program

*System of Care is a **philosophy**, a **concept** created to reform child serving systems, services, and supports.*

MO Statute 2004 - 630.097. The department of mental health shall develop, in partnership with all departments represented on the children's services commission, a unified accountable comprehensive children's mental health service system. (US Congress 1995)

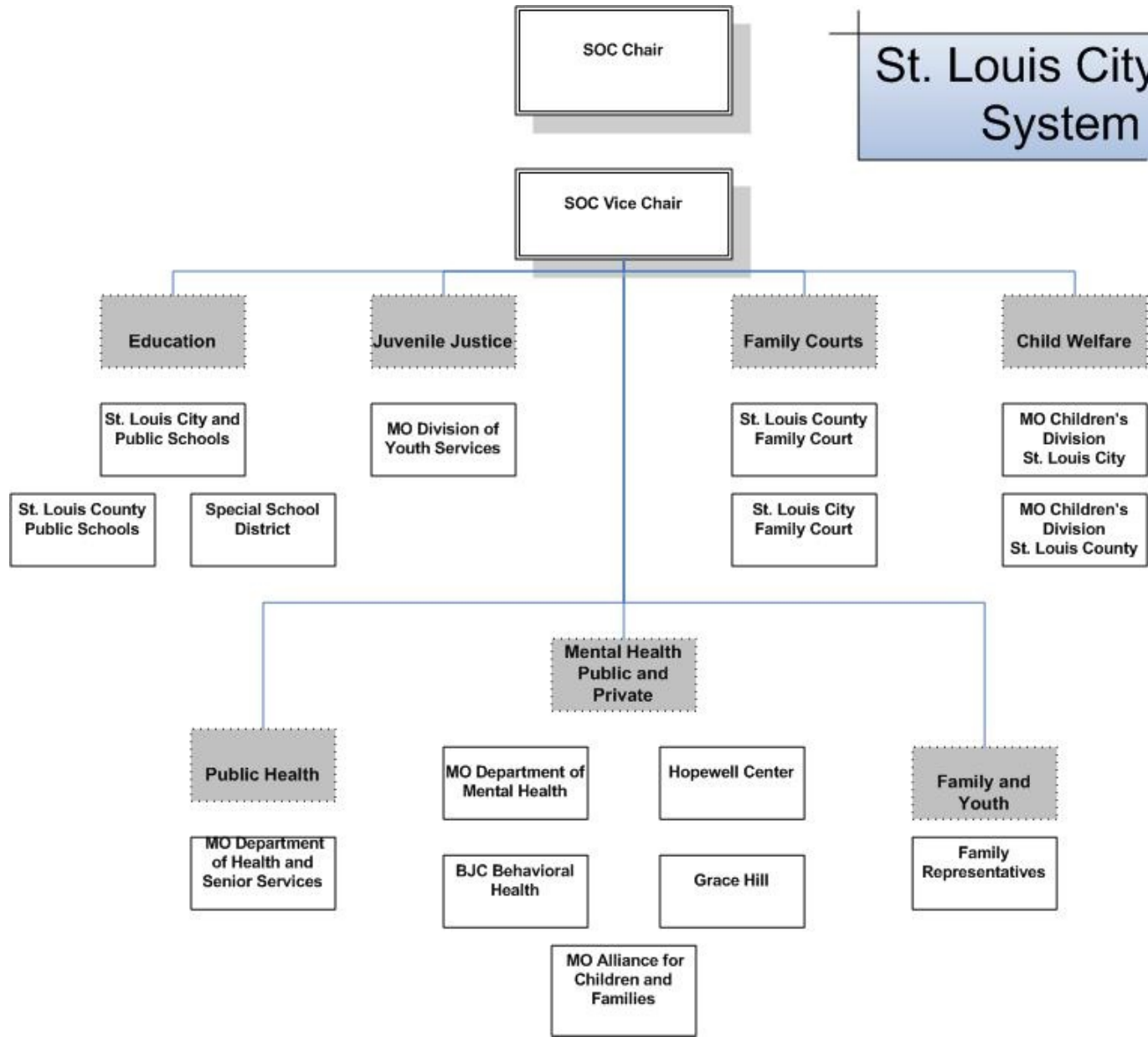
Timeline System of Care in Missouri



SOCs in MO: 1) Adair, 2) Barry, 3) Butler, 4) Clay/Platte, 5) Franklin, 6) Jackson/Kansas City, 7) Jefferson City, 8) Lincoln/Pike, 10) Ray, 12) Springfield, 13) St. Charles, 14) St. Francois, 16) St. Louis City and County, 17) Warren. Not Mapped- Cape Girardeau; Cole; Dent; Gasconade; Henry; Jasper; Osage; Ozark; Rolla

- 1997 – SAMHSA funded St. Charles Partnership with Families
- 1998 – SAMHSA funded Southwest Missouri Show Me Kids
- 2002 – SAMHSA funded Youth in Transition St. Louis System of Care
- 2006 – SAMHSA funded St. Joseph Circle of Hope and Missouri Transformation
- 2015 SAMHSA funded St. Louis Regional System of Care
- 2017 SAMHSA funded SOCCCESS

St. Louis City and County System of Care



System of Care St. Louis Region

The mission of the System of Care, St. Louis Region is to support children, youth and their families by seamlessly integrating social and emotional wellness services and practices into all aspects of the care system.

2015 – 2019 \$924,610 Annually:

- Collaboration and Alignment
- Monitoring and Evaluation
- Family and Youth Engagement
- Mental Health Services and Supports
- Policy and Advocacy
- Strategic Financing

Linkage and Referral

2014-
2015

Service Providers identified a lack of information, resources, and technology to facilitate care coordination as a major concern.

2016 -
2017

Mission Matters Discovery recommends partnering with United Way 211 and Behavioral Health Response to improve resource directory, care coordination, and linkage and referral
SOC Council members meet with 211, BHR, and key partners to make recommendations for system improvements.

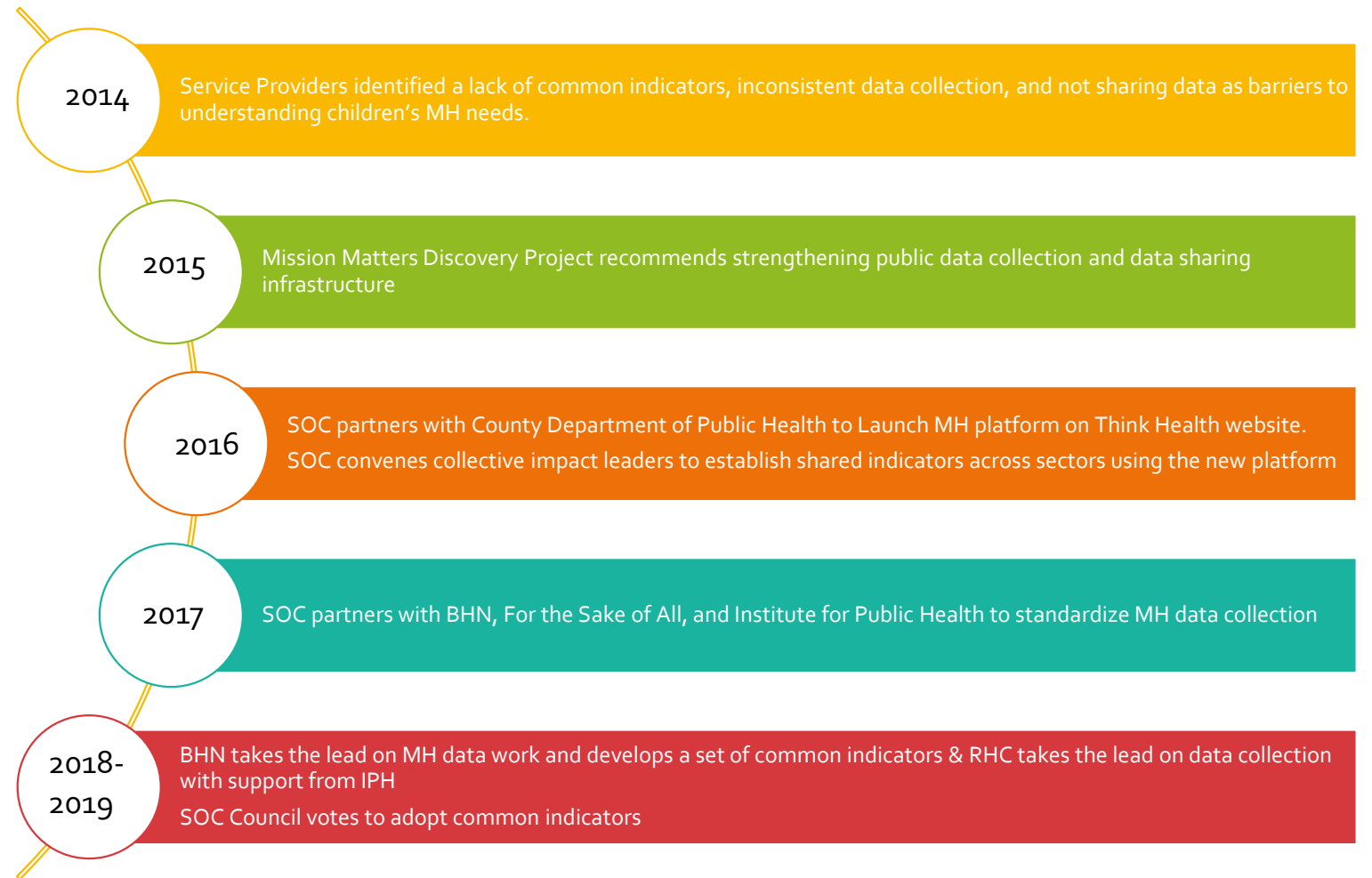
2018

United Way 211 embarks on year-long Community Information Exchange process.
SOC Shifts focus to launch an early adopter cohort to inform enhancements to the BHR system.

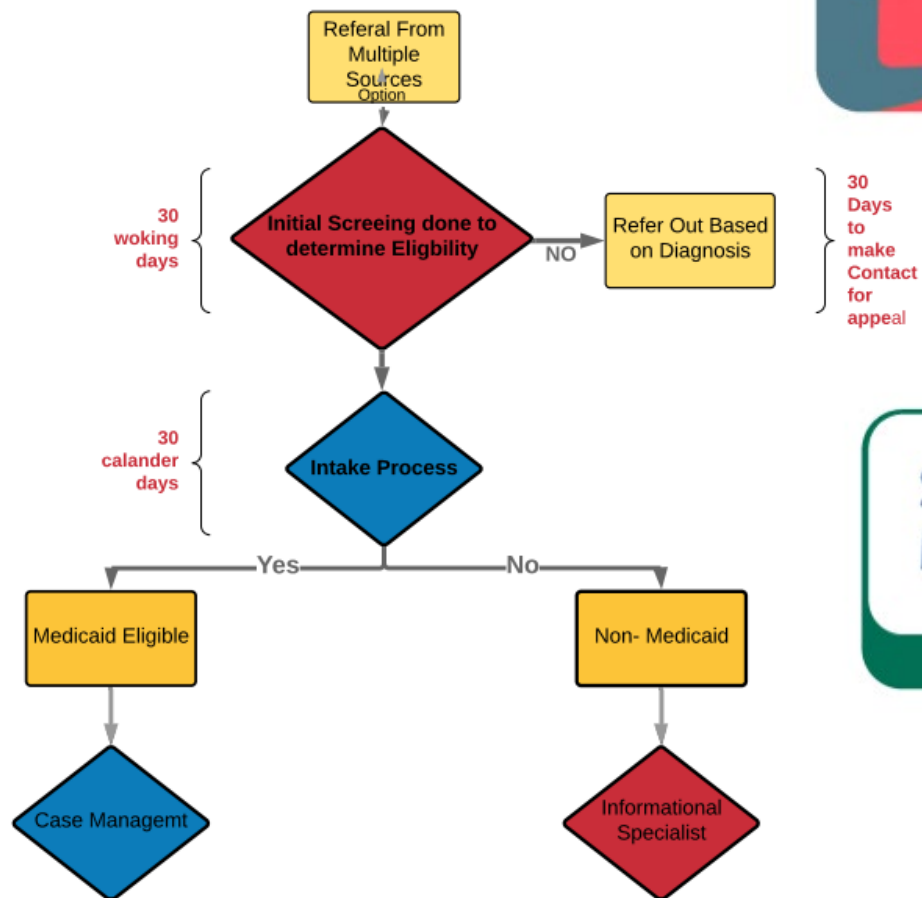
2019

BHR invests in system enhancements and merges its City & County Youth Connection Helpline – the System of Care Linkage and Referral System is launched

Mental Health Data



System Navigation



St. Louis Regional Mental Health Data Report

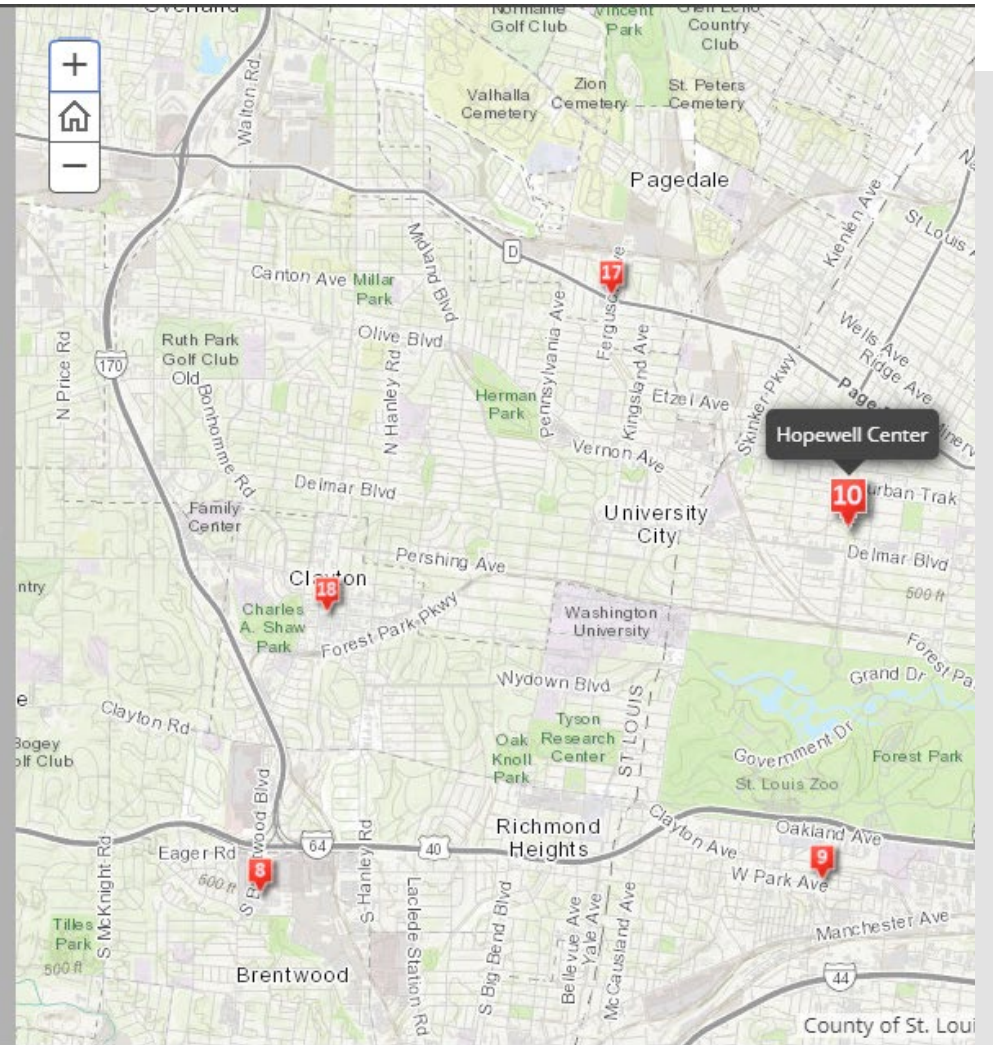
May 2019

Program Locator

...y sensitive quality mental
...h dignity, respect and
...mpassion.

...w out of a 30-year history of service. ALM Hopewell Center
...to children and adults in the northern and central parts of the
...professional mental health staff serves a growing caseload of
...percent are chronically mentally ill and suffering from major
...psychiatric disorders.

At Amanda Lockett Murphy Hopewell Center, we understand that
...stigma and discrimination are long-standing issues within the
...mental health community. Hopewell's new strategic direction
...embraces the vision of enhanced wellness and recovery as the
...cornerstone to eliminating stigma and discrimination that
...accompanies mental illness. From:
<http://hopewellcenter.com/about/a-word-from-the-ceo/>



Behavioral Health Network



CareSTL Health



Children's Permanency
Partnership



Epworth Children & Family
Services



Family Forward

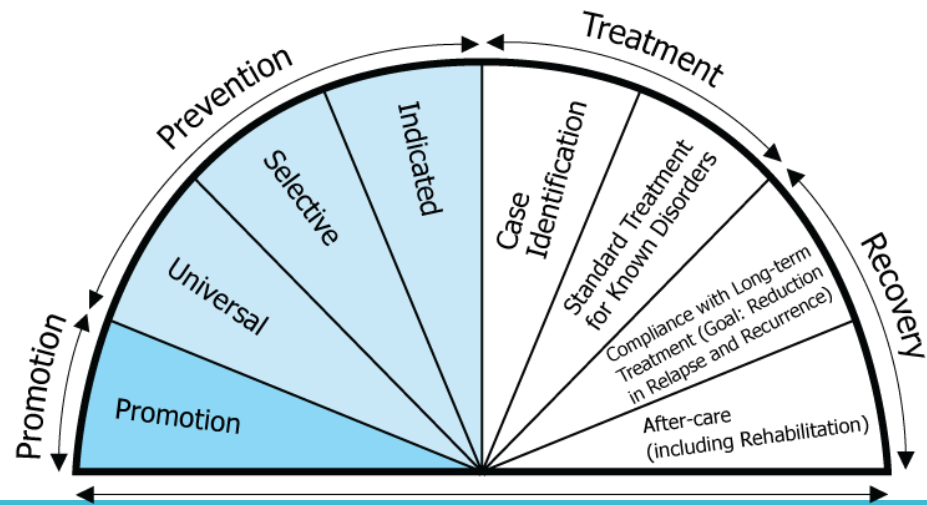


Foster and Adoptive Care
Coalition



Generate Health

Mental Health Services for Children with SED



Investment in Direct Mental Health Services

Round 1 | \$206,720
6 Month Service Expansion

Children's Home Society Neurodevelopmental Trauma Assessment Services - 40
 Myrtle Hilliard Davis Project REACH - 75
 Community Psychological Services - 30
 Children's Advocacy Services - 20

Round 3 | \$694,932
Emerging Needs

Places for People Family Support & Child Prescriber - 20
 Children's Advocacy Services Children with Problem Sexual Behaviors - 70
 AM, FACC, CPS, CAS - continued

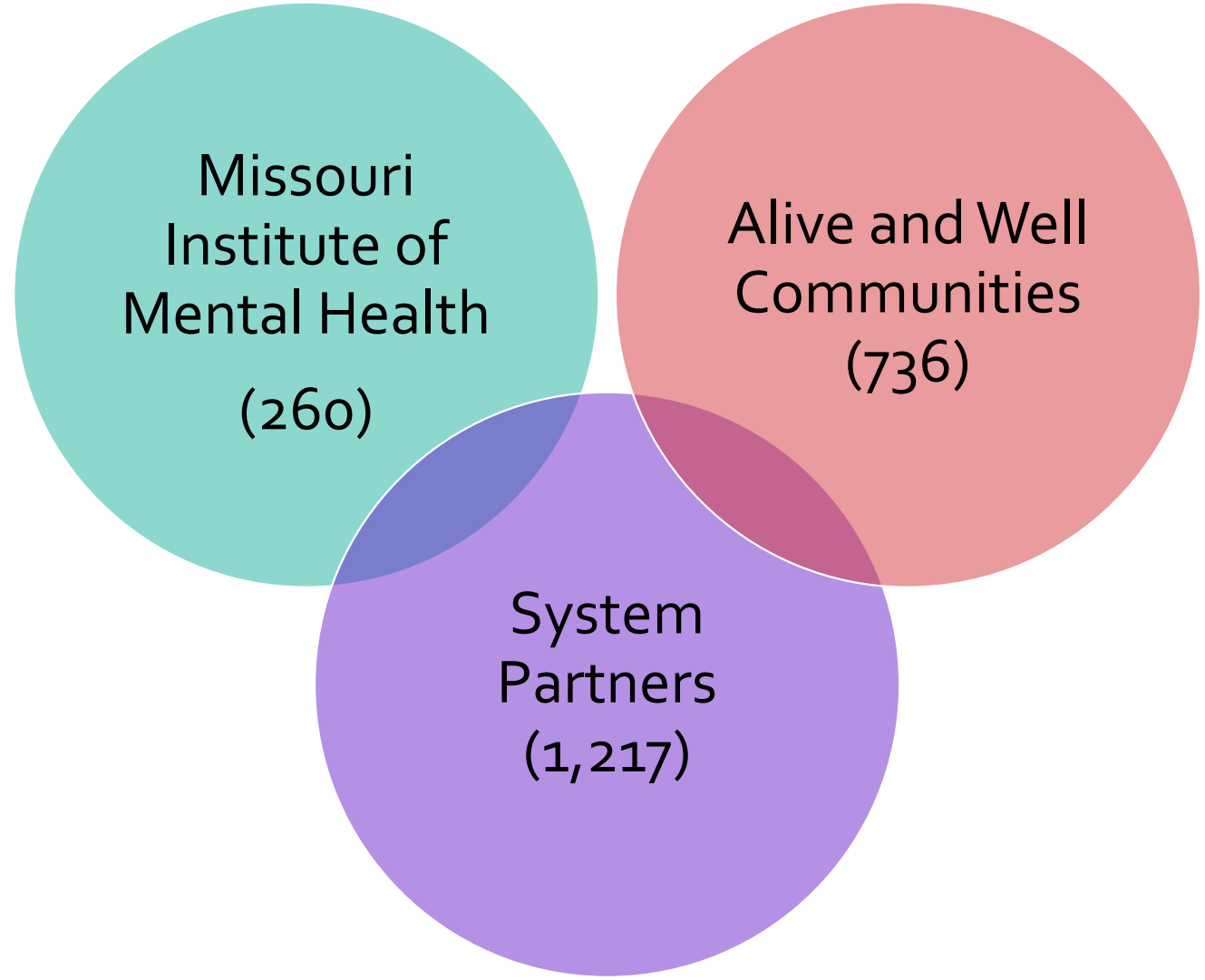
Round 2 | \$545,695
School Based MH Care & Preventing Foster Care Placement Disruption

Annie Malone Children and Family Services - 50
 Foster and Adoptive Care Coalition - 25
 Mercy Health Foundation - 75
 CPS, CAS - continued

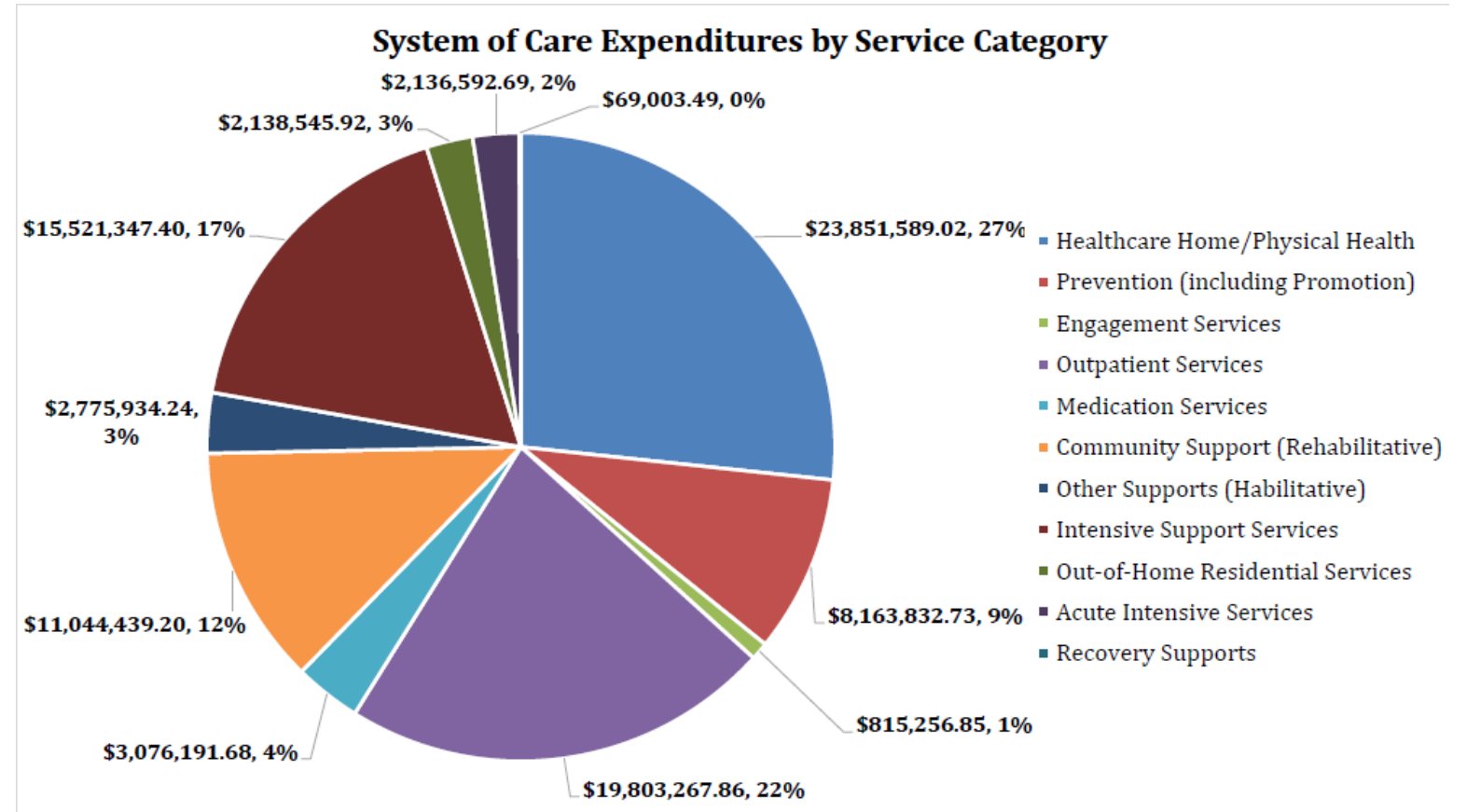
Round 4 | \$617,932
Emerging Opportunity

FamilyForward - 5
 AM, FACC, CPS PFP - continued

Workforce Development



Strategic Financing



FY20 – FY23 Expansion Preview

Integrated Family Treatment Model and
Family Support Partners



Thank you to the Expansion Planning Grant Writing Team!

*We couldn't have done it
without you.*

- *Angela Brown, St. Louis Regional Health Commission*
- *Ernest Gauss, Vision for Children at Risk*
- *Sally Haywood, Behavioral Health Network*
- *Jessica Holmes, St. Louis Integrated Health Network*
- *Mike Leveque, UMSL Center for Behavioral Health*

Award Details

- 4 Year Project Period 09/29/2023
- \$999,987 annually
- 3:1 Match Years 1-3; 1:1 Match Year 4
- <20% Evaluation
- <30% Infrastructure Development
- >50% Direct Services

Population of Focus

- A. Juvenile Justice involved youth ages 12-18 with Serious Emotional Disturbance (SED) and those with early signs and symptoms of Serious Mental Illness, including first episode psychosis, who live in the Promise Zone.
- B. Focus on families in which the youth has an SED and the parent/caregiver has an unmet mental health need of their own that directly impacts the youth's mental health outcomes.
- C. Families Served –
 - i. Year One – 50
 - ii. Year Two – 100
 - iii. Years Three and Four – 150 each

Service Providers

Integrated Family Treatment Model:

Places for People and Children's Advocacy Center

- Provide evidence-based treatments focused on either individual or family needs including treatments focused on adults, youth, families, and trauma focused treatment options, depending on the needs and presentation of the family members

Family Support Partners:

Vision for Children at Risk

- Build a cohort of FSPs to support families as they connect to and navigate mental health services in institutions and the community

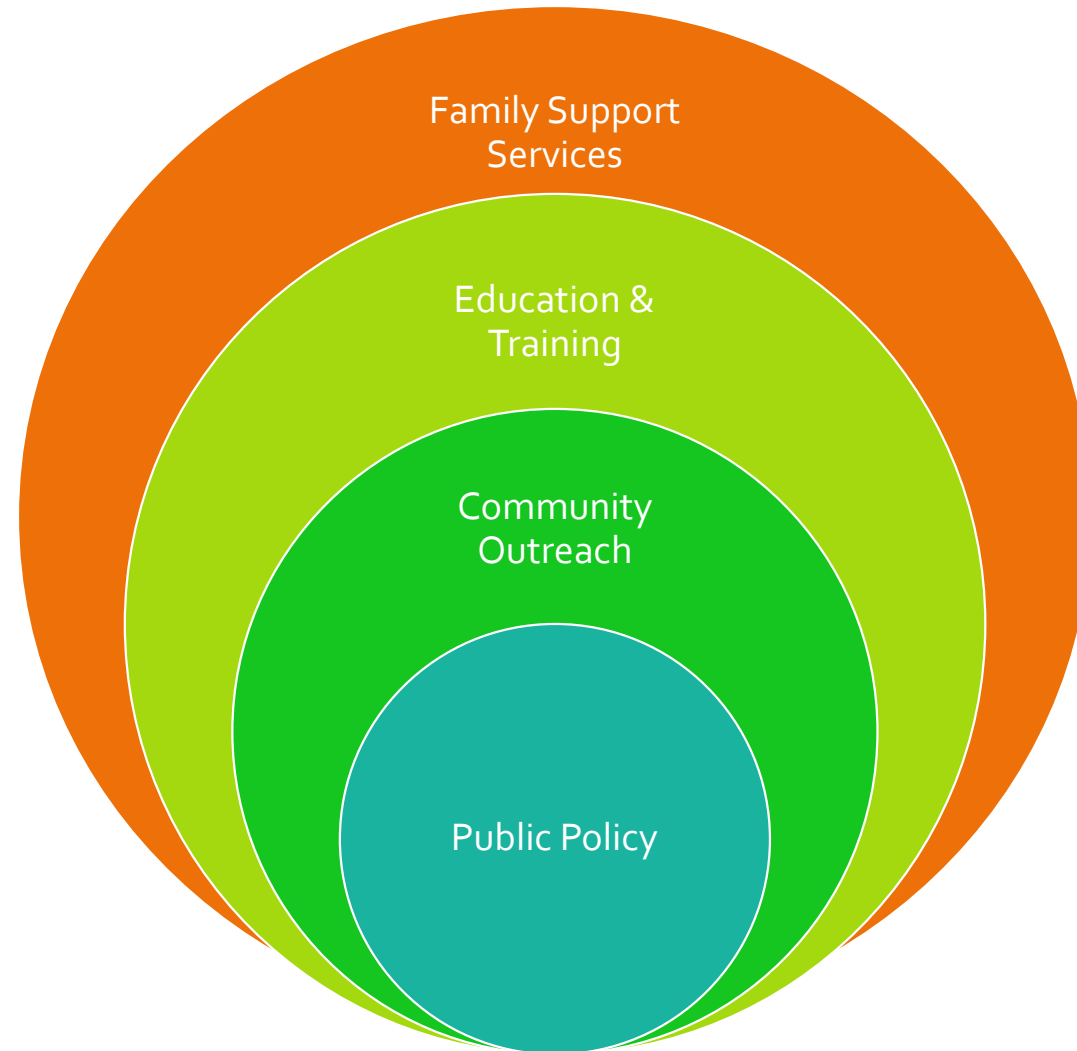
Expansion Goals

- 1. Strengthen and enhance current infrastructure to connect juvenile justice involved youth and families with mental health service providers and Family Support Partners (FSPs)***
 - Expand the existing SOC Linkage and Referral platform to serve as the entry point to connect juvenile justice involved youth and their families with the Integrated Family Treatment Model;
 - Build a cohort of agency partners (Network of Practice) who have fully implemented the Integrated Family Treatment Model; and
 - Integrate treatment modalities and develop inter-agency communication, billing structures, and intensive case management.

Expansion Goals

- 2. Connect juvenile justice involved youth and families with Family Support Partners**
 - Employ parents with lived experience to become state and nationally certified FSPs.
 - Conduct outreach through referral partners serving the Promise Zone

Family Support Partners



Family Support Services

- Information & Referral
- Family Navigation
- One-to-One Support
- Support Groups
- ASQ Screening

Education & Training For

- Families & Youth
- Child Serving Agencies

Community Outreach

- Resource Fairs
- Children's Mental Health Awareness Events
- Parent Café

Public Policy

- Identify Needs
- Grassroots Advocacy
- Community Cafe

Expansion Goals

- 3. Create an Integrated Family Treatment Model for juvenile justice involved youth and families**
 - The Network of Practice will be responsible for developing an IFTM implementation guide and a training and technical assistance model that will guide expansion to other service provider partners in Years 2-4.
 - Improve Mental Health Outcomes for Youth
 - Policy Change

Key Activities



Standardized Intake with City and County Courts

Outreach to organizations in the Promise Zone

Family Support Partner assigned to assist families with navigation and social service needs

Behavioral Health Response provides linkage to IFTM or other mental health services as needed



Questions

smuhammad@stlmhb.com



2020 SOC Memorandum of Understanding

- Guiding Principles
 - Family Focus
 - Cultural and Linguistic Competence
 - Least Restrictive
 - Individualization
 - **Interagency Cooperation**
 - **Collaboration**
 - Accessibility
 - Community Based
 - Accountability
 - Trauma Informed
 - Equity Focused
- Shared Information
 - basic non-identifying client, service delivery, and outcome data
 - **Mutually agreed upon** by SOC members with data access levels
- Member Agreements and Norms
 - Participation
 - Follow-through
 - Communication
 - **Connection**